

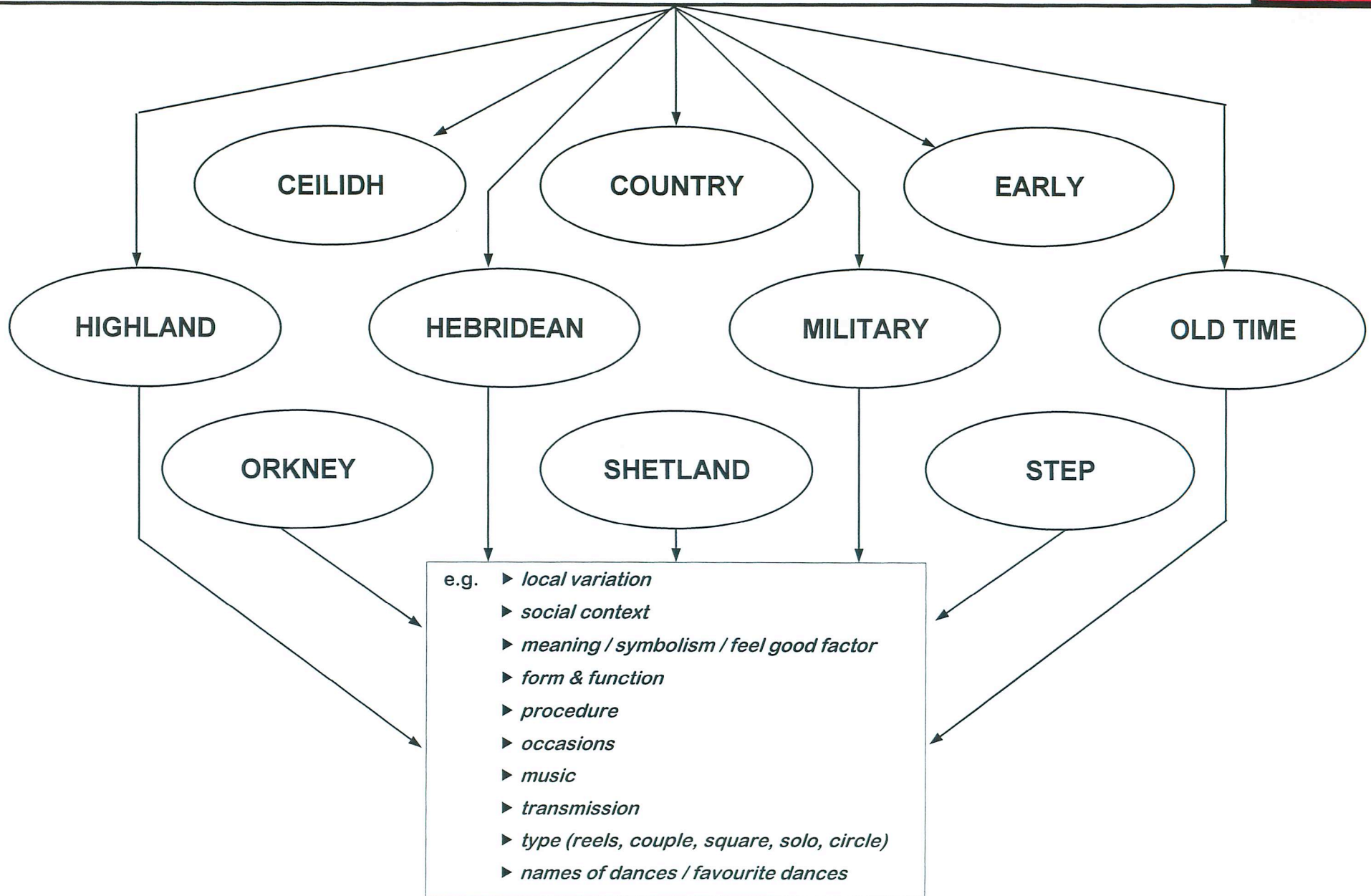
Interview Analysis
Guidelines for Researchers
June 2000

Introduction

The enclosed sheets are intended to assist the researcher to organise the information received during an interview. Once the interview has been transcribed the researcher may use the ideas on the “balloon sheets” (FW2) to organise the data more precisely according to the colour-coding shown. This system will help to provide a general overview and a depth of analysis.

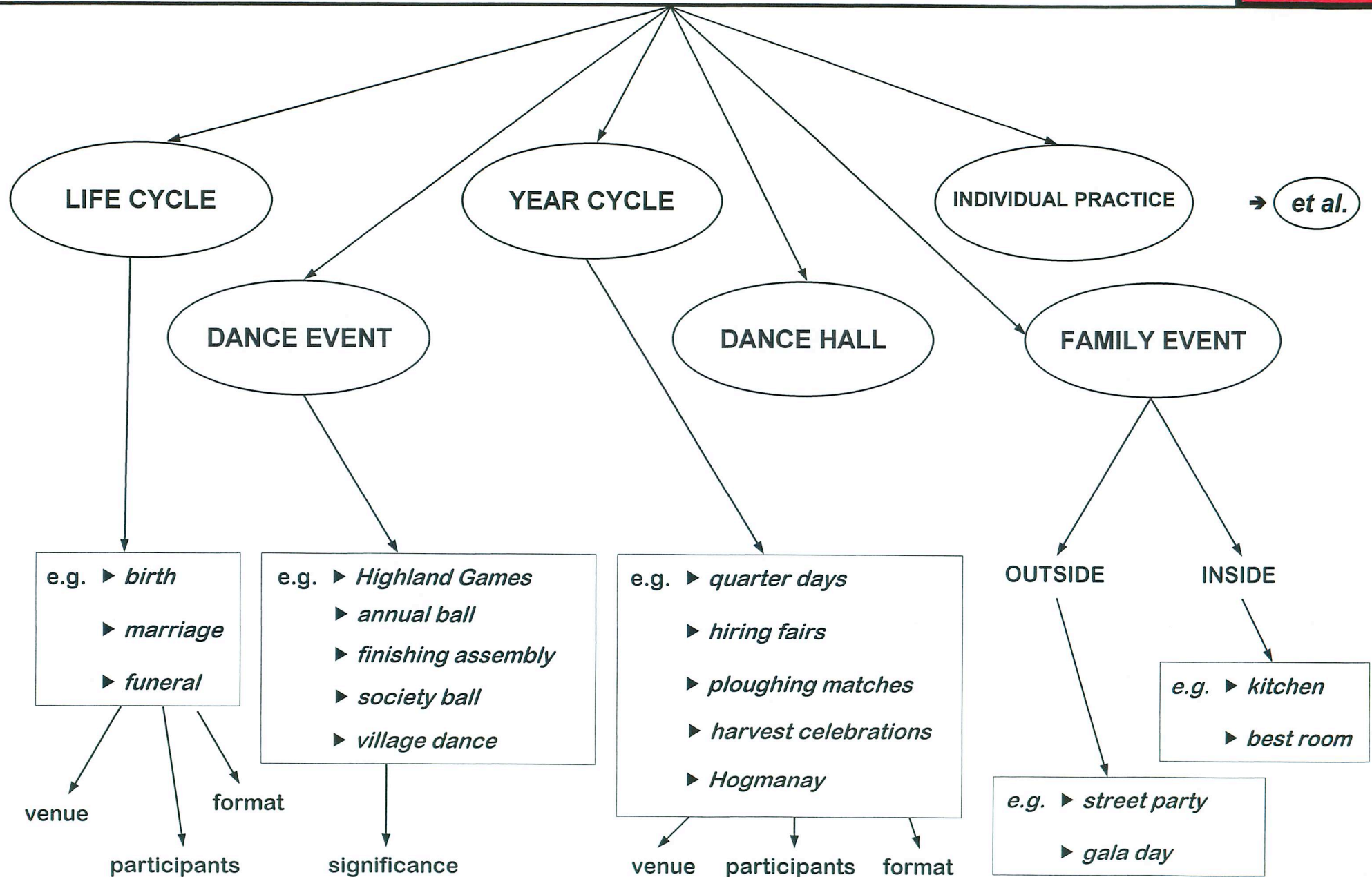
1. DANCE TRADITIONS

RED



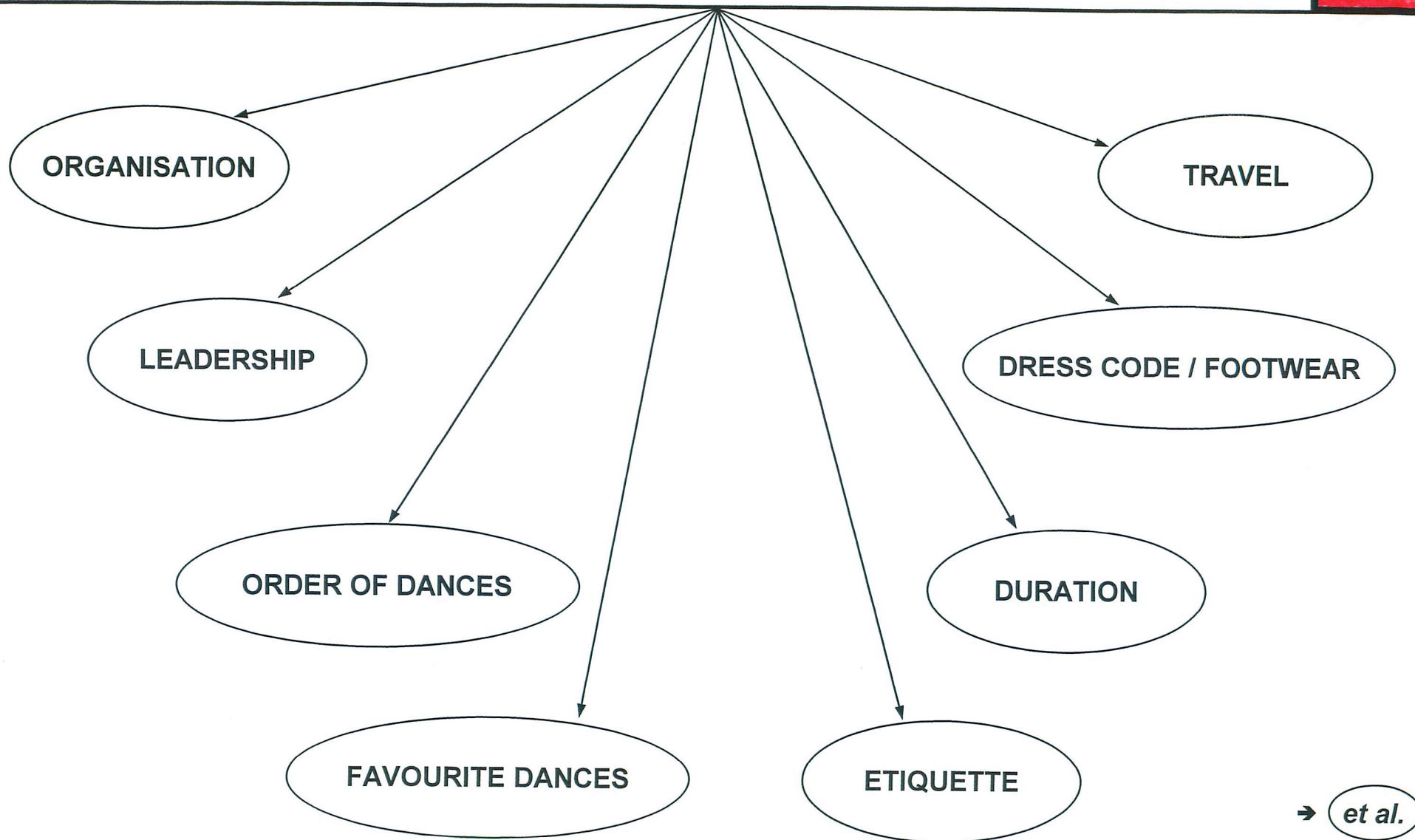
2. OCCASIONS & VENUES

RED



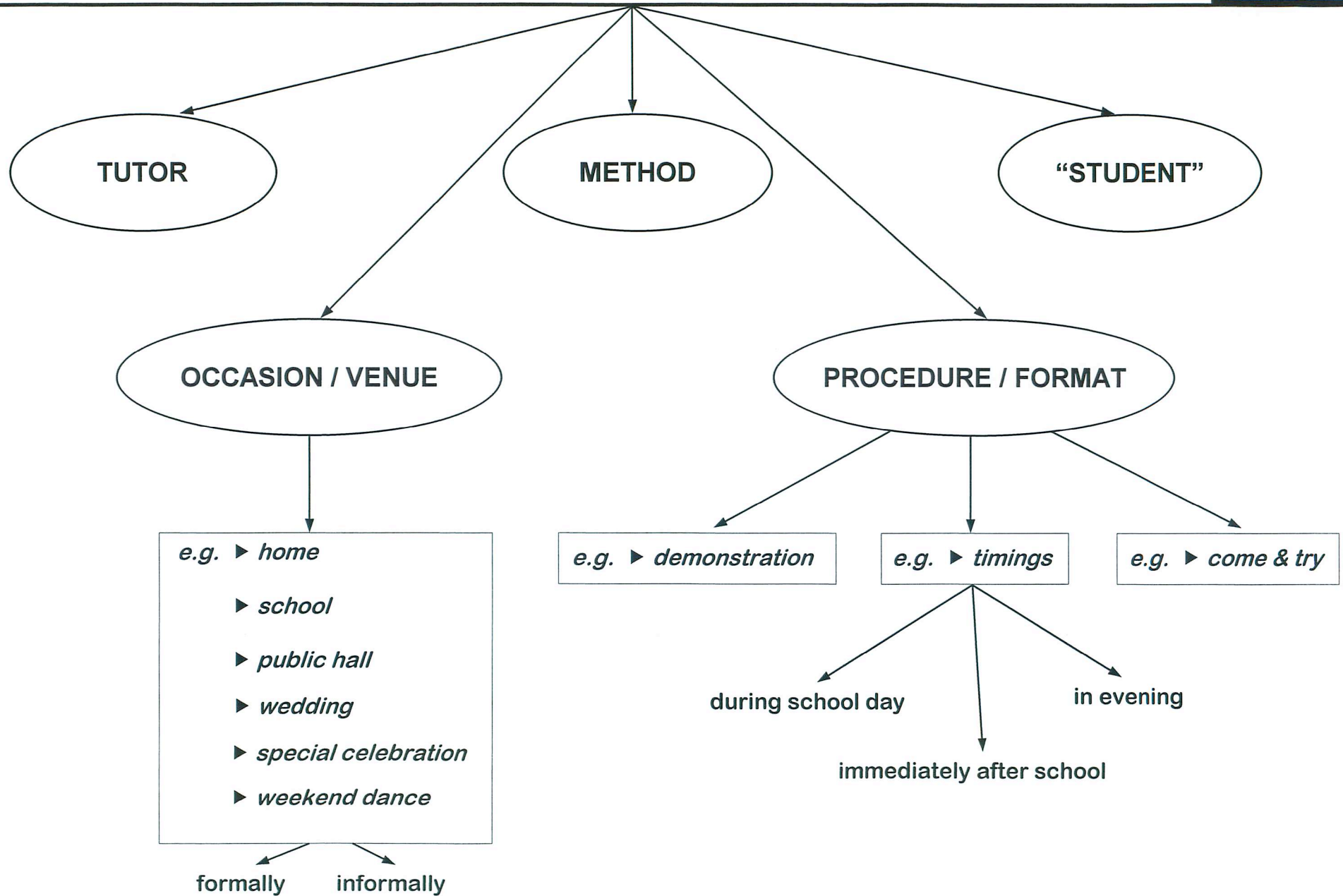
3. PROCEDURE AT DANCE OCCASIONS

RED



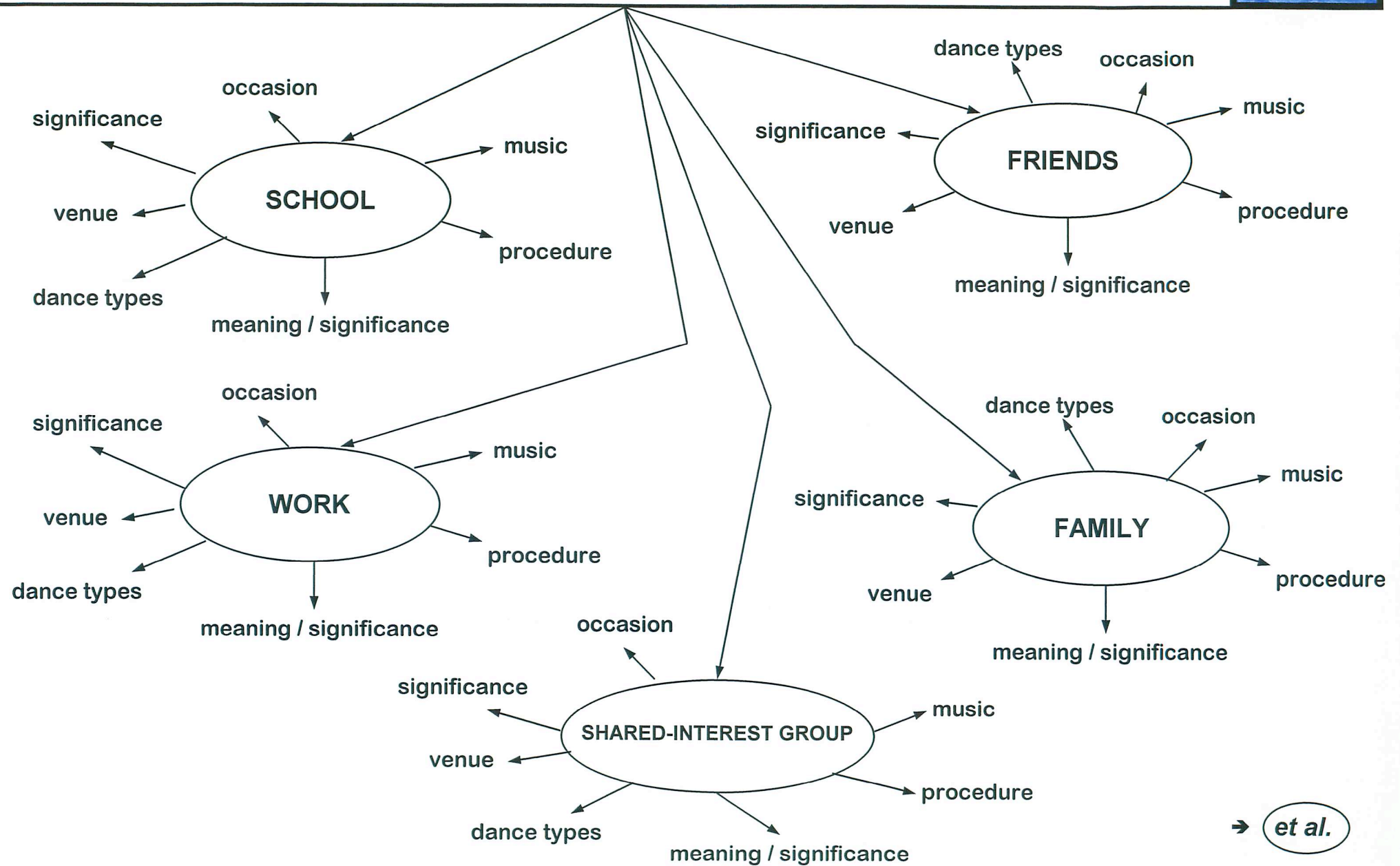
4. LEARNING & TRANSMISSION

BLUE



5. SOCIAL GROUPS; DANCE PERFORMANCE

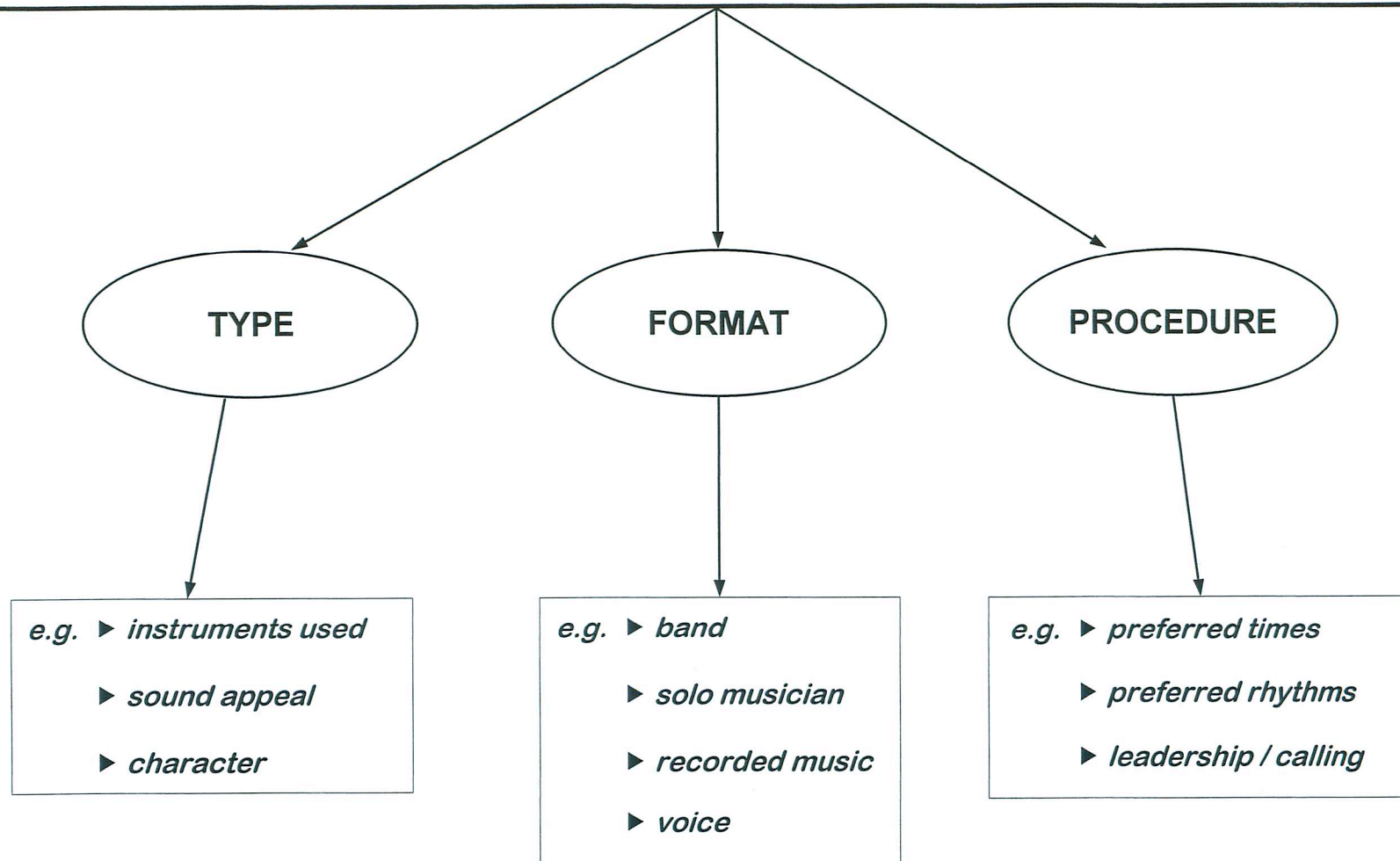
BLUE



→ *et al.*

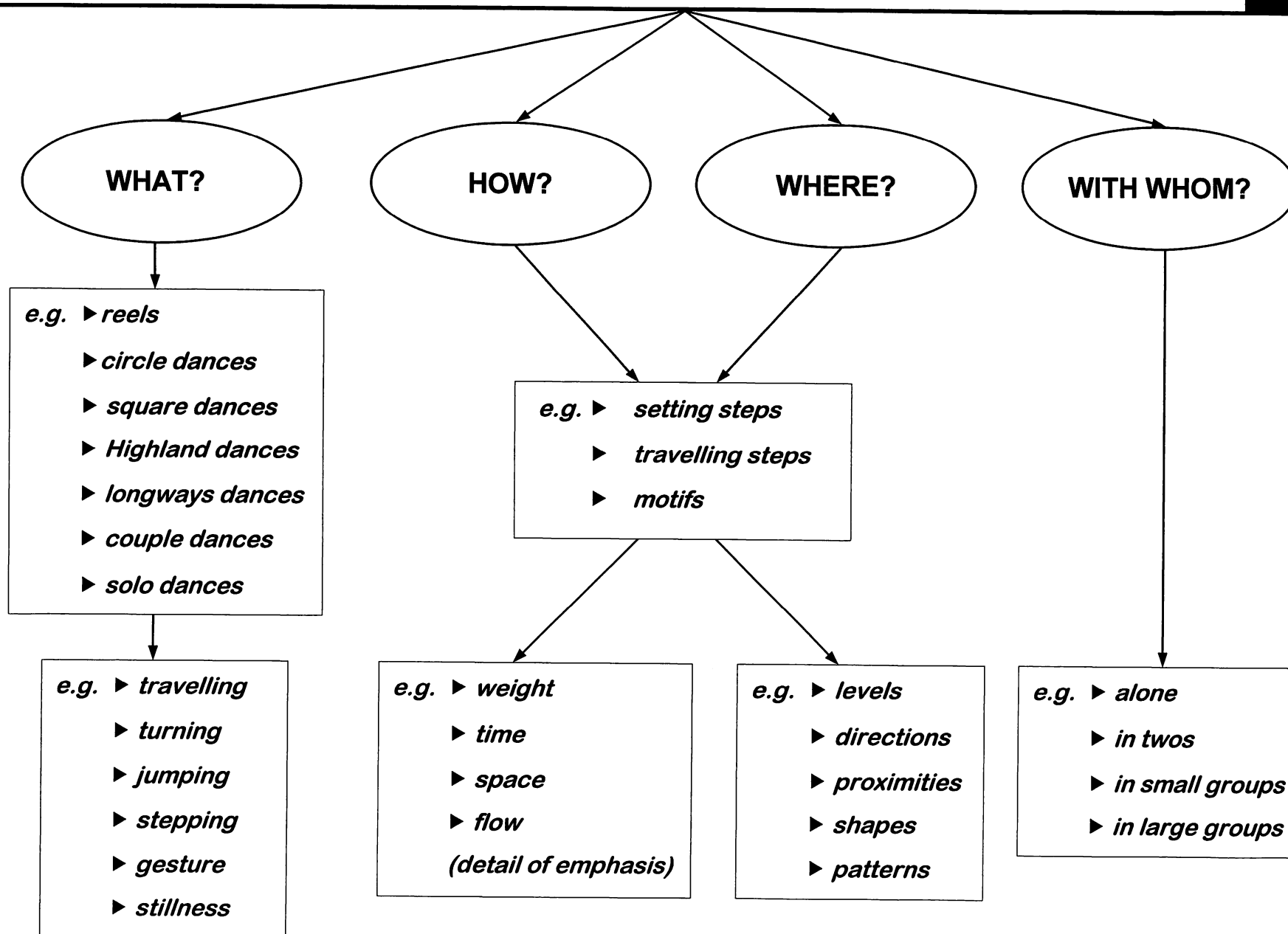
6. MUSIC for DANCE

GREEN



7. FORM & STYLE - TECHNICAL DANCE ANALYSIS

BLACK



The Scottish Traditions of Dance Trust
54 Blackfriars Street
Edinburgh EH1 1NE
phone/fax: 0131-558 8737
email: edinburgh.stdtd@virgin.net